



Up-to-date Questions and Answers from authentic resources to improve knowledge and pass the exam at very first attempt. ----- Guaranteed.



TM1-101 Dumps
TM1-101 Braindumps
TM1-101 Real Questions
TM1-101 Practice Test
TM1-101 Actual Questions



Trend

TM1-101

Trend Micro ServerProtect 5.x



Answer: A

QUESTION: 178

How many versions of the scan engine and the virus pattern file are available for rollbacks?

- A. Five. ServerProtect retains the five latest scan engine and virus pattern files.
- B. Two. ServerProtect retains the two latest scan engine and virus pattern files.
- C. All previously loaded versions of the scan engine and virus pattern files are available for rollback.
- D. One. ServerProtect retains only the immediately preceding version of the scan engine and virus pattern file.

Answer: D

QUESTION: 179

You want to install ServerProtect on both Intel and Alpha servers into one domain. Is it possible to configure a mixture of Alpha and Intel servers into one domain and have the same Information Server handle automatic pattern updates?

- A. Yes, ServerProtect supports both server types.
- B. No, ServerProtect does not support Alpha servers.
- C. No, Alpha servers can not perform automatic updates.
- D. No, you must install a new Information Server for the Alpha server.

Answer: B

QUESTION: 180

You are an administrator of a Windows network with 50 Windows Normal Servers. You are troubleshooting a blue-screen problem on three of these servers. The blue -screen problem is noticed every second Monday of each month. Which two tools can you use to isolate the cause of the problem? (Choose two.)

- A. use Setdbg.exe to generate the tmfilter.log file
- B. use debug.exe to generate the SPNT.dbg log file
- C. use Network Monitor to see which network packets are causing the problem
- D. use Activesupport.exe to collect all debug information from one of the Normal Servers that is experiencing the problem

Answer: A, D

QUESTION: 181

What are two ways to enable Debug mode in ServerProtect 5.x? (Choose two.)

- A. in the Management Console click on View | Debug; select Enable Debug Log
- B. in the Management Console, click on the root domain or any server in the Domain tree; click Do | Create Debug Info; select Enable Debug
- C. open the registry editor and create a new item for the debug information; store it in the Under the HKEY_LOCAL_MACHINE\SOFTWARE\TrendMicro directory
- D. open the registry editor and under the HKEY_LOCAL_MACHINE\SOFTWARE\TrendMicro\DebugLog\ directory create a new item to define where to store the debug info; set the appropriate values and restart services

Answer: BD

QUESTION: 182

When performing a Manual Update on the Information Server, you receive this message: "The update files on your Information Server are up to date. You do not need to perform an update." You know that there is a newer pattern file on the ActiveUpdate server. What two steps can you take to resolve the issue? (Choose two.)

- A. make sure that the Information Server can access the ActiveUpdate server
- B. make sure that the Server.ini file is not cached in the proxy servers URL cache
- C. make sure that the Information Server can resolve the name of the Proxy Server
- D. make sure that the Server.ini file is not cached in the Information Server's browser cache

Answer: B, D

QUESTION: 183

You attempt to perform a manual update of the Pattern file on an Information Server but the process fails. Which three steps should be completed to troubleshoot the issue? (Choose three.)

- A. verify that the Normal Server can access the Internet
- B. check the Proxy Server settings in the Management Console
- C. check for errors in the \Program Files\Trend\SPProtect\Temp\TMupdate.txt file
- D. verify that the Normal Server has enough disk space to extract the downloaded files

- E. delete the contents of the Program files \Trend\SProtect\Temp folder and attempt to update again
- F. verify connectivity to the ActiveUpdate server by downloading the server.ini from <http://serverprotect-t.activeupdate.trendmicro.com/activeupdate/server.ini>

Answer: B, E, F

QUESTION: 184

How do you force a core dump on a NetWare Normal Server?

- A. CTRL + ALT + Right-Shift
- B. Left-Shift + Left-ALT + ESC then press .c
- C. at the server prompt, type load coredump.nlm
- D. Left-Shift + Right-Shift + ALT + ESC then press .c

Answer: D

QUESTION: 185

Where is the tmfilter.log file located by default?

- A. C:\tmfilter.log
- B. %systemroot%\tmfilter.log
- C. %systemroot%\system32\tmfilter.log
- D. \Program Files\Trend\SProtect\tmfilter.log

Answer: B

QUESTION: 186

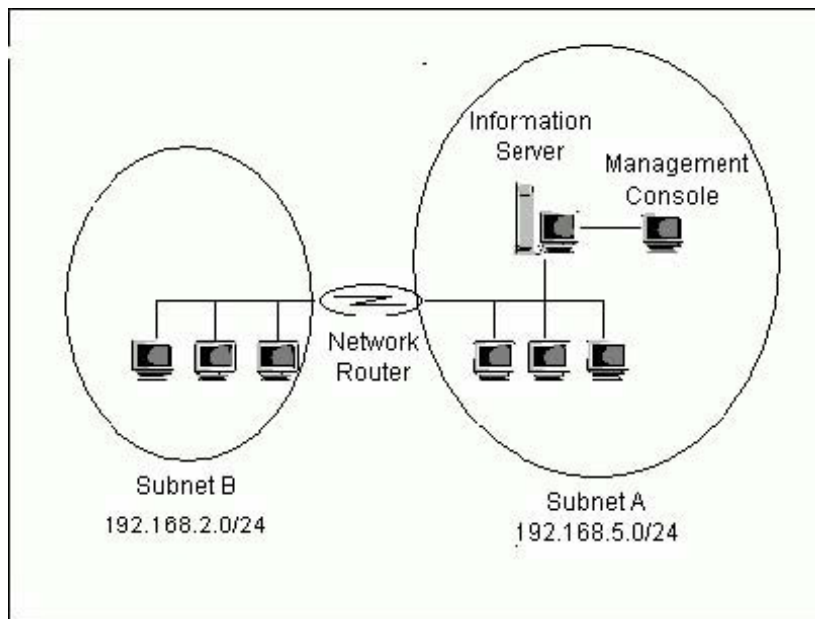
When deploying updates to Normal Servers the error "Operation Failed (258)" is returned. What is the reason for this error?

- A. The user performing the deployment is not logged in as administrator.
- B. The Normal Server cannot connect to the Internet, and the operation timed out.
- C. The Information Server does not have any new updates to deploy to the Normal Server.
- D. The Information Server did not receive a response from the Normal Server, and the operation timed out.

Answer: D

QUESTION: 187

Click the Exhibit button. An administrator successfully updates and deploys a new Pattern file and scan engine to all Normal Servers in the network. The administrator then installs five new Normal Servers in subnet B to the Information Server in subnet A using the Management Console (as shown in the exhibit). A few hours after the last Normal Server has been successfully installed, the administrator notices that ALL Normal Servers are suffering from performance degradation and decides to roll back the scan engine on the servers. After the rollback has been completed, the administrator notices that the five newly installed servers did not roll back to the previous scan engine. What is the cause of the problem?



- A. The newly installed Normal Servers cannot communicate with the Information Server.
- B. The newly installed Normal Servers do not have a previous scan engine to roll back to.
- C. The newly installed Normal Servers have not finished registering to the Information Server.
- D. After installation, the newly installed Normal Servers must be synchronized with the Information Server.

Answer: B



SAMPLE QUESTIONS

*These questions are for demo purpose only. **Full version** is up to date and contains actual questions and answers.*

Killexams.com is an online platform that offers a wide range of services related to certification exam preparation. The platform provides actual questions, exam dumps, and practice tests to help individuals prepare for various certification exams with confidence. Here are some key features and services offered by Killexams.com:

Actual Exam Questions: *Killexams.com provides actual exam questions that are experienced in test centers. These questions are updated regularly to ensure they are up-to-date and relevant to the latest exam syllabus. By studying these actual questions, candidates can familiarize themselves with the content and format of the real exam.*

Exam Dumps: *Killexams.com offers exam dumps in PDF format. These dumps contain a comprehensive collection of questions and answers that cover the exam topics. By using these dumps, candidates can enhance their knowledge and improve their chances of success in the certification exam.*

Practice Tests: *Killexams.com provides practice tests through their desktop VCE exam simulator and online test engine. These practice tests simulate the real exam environment and help candidates assess their readiness for the actual exam. The practice tests cover a wide range of questions and enable candidates to identify their strengths and weaknesses.*

Guaranteed Success: *Killexams.com offers a success guarantee with their exam dumps. They claim that by using their materials, candidates will pass their exams on the first attempt or they will refund the purchase price. This guarantee provides assurance and confidence to individuals preparing for certification exams.*

Updated Content: *Killexams.com regularly updates its question bank and exam dumps to ensure that they are current and reflect the latest changes in the exam syllabus. This helps candidates stay up-to-date with the exam content and increases their chances of success.*

Technical Support: *Killexams.com provides free 24x7 technical support to assist candidates with any queries or issues they may encounter while using their services. Their certified experts are available to provide guidance and help candidates throughout their exam preparation journey.*

For More exams visit <https://killexams.com/vendors-exam-list>
Kill your exam at First Attempt....Guaranteed!